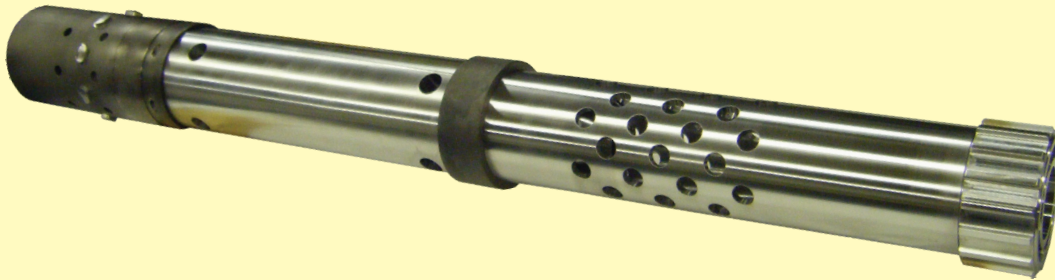




B.C. INSTRUMENTS

Major Products & Services
(Nuclear Energy)
Supplying to CANDU Reactors since 1971

B.C. Instruments (BCI) is a Precision Machine Shop, manufacturing and supplying quality components and assemblies to the Nuclear Energy, Aerospace, Defence, Medical, Electronic and other related industries.



Fuel Channel
Shield Plug
Assembly

Quality Standards

ASME Section III

CSA-N285.0
(TSSA Cert.)

CSA Z299.2
(CANPAC Approved)

ISO9001 : 2008

AS 9100B



Fittings
Adaptor & Thermowells



Feeder Connection Forged
Flange Elbow and Cap Screw (ACR-1000)



Feeder Connection
Flange, Hub, Seal Ring & Bolts



Fuel Channel - End Fitting
Sleeves, Journal Rings
and Calandria Tube Insert

Contact: Harshad Patel
Tel.: 905-939-7323 ext 354

harshadp@bc-instruments.com
www.bc-instruments.com